

USGIF annually awards scholarships to promising high school seniors, collegiate undergraduates, graduates and doctoral students studying or planning to study geospatial intelligence-related field.

All scholarship recipients are chosen based on their academic and professional excellence in a field related to the geospatial intelligence tradecraft. Qualified candidates are selected by the Foundation's Scholarship Subcommittee, which is composed of USGIF member organizations.

In the past nine years, USGIF has awarded \$691,000 to exceptional students. Last year, USGIF awarded \$107,000 to 25 recipients: 6 Ph.D. candidates, 9 master's candidates, 4 undergraduates and 6 high school seniors.

To apply for the 2014 USGIF Scholarship, visit www.usgif.org

Deadline to apply: April 25, 2014

DOCTORATE



G. PAUL BAILEY
University of Colorado

Paul has worked in the areas of systems analysis, product integration, project management, and business development for ESRI, Global Water, Hitachi, and Tektronix in the United States and MCR Technology in Saudi Arabia. He holds a bachelor's degree in environmental design and a master's in urban and regional planning. Paul is pursuing a Ph.D. in geography with a research focus leveraging mobile crowdsourced-georeferenced data within strategic decision support.



SERGIO BERNARDES
University of Georgia

Sergio received his bachelor's in agricultural engineering and a master's in remote sensing from the Brazilian National Institute for Space Research. His primary research involves innovative analyses of large datasets, including time series of remotely sensed images, ground-based climate data and derived metrics to assess vegetation responses to natural and anthropogenic environmental changes. Sergio is currently pursuing his Ph.D. in geography and certification in geographic information science.



CRYSTAL ENGLISH
*San Diego State University/
University of California, Santa Barbara*

Crystal's current research focuses on the development of multi-attribute, geospatial and temporal data models to assess neighborhood vulnerability. English holds a master's degree in GIScience from California State University, Northridge where she was a scholar in the Intelligence Community Centers for Academic Excellence. She also holds a California Department of Justice certification in crime and intelligence analysis.



ABBY FRAZIER
University of Hawaii at Manoa

Abby is a Ph.D. student specializing in climatology in the department of geography. She earned her master's at the University of Hawaii, and received her BA in geography and BS in mathematics at the University of Vermont. She is interested in research areas that fuse climatology with geospatial technology. Abby has focused her work on analyzing spatial patterns of rainfall in Hawaii using geostatistics and global scale spatial analyses of climate change.



THOMAS GERTIN
George Mason University

Tom holds a master's degree in geoinformatics and geospatial intelligence from George Mason University. His thesis involved maximizing the cost of shortest paths between facilities. Tom's interests include location science, microgeography, forecasting trends, geospatial data modeling, and recommender systems. He would like to start his own business involving geospatial intelligence and technology.



TAMMY E. PARECE
Virginia Tech

Tammy's dissertation develops a geospatial model to optimally site urban agriculture simultaneously addressing environmental issues and social problems. She is active in geospatial outreach and instruction for middle school students, and high school and community college teachers. She has served as a teaching assistant for six GIS and remote sensing courses. Her professional goals include teaching geospatial analysis and geography courses at the university level.

GRADUATE



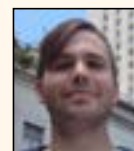
STEVE CHIGNELL
Colorado State University

Steve is currently a master's student in watershed science and researching the use of GIS, remote sensing, and statistical modeling for mapping the extent of headwater regions in the face of climate change and urbanization. He is interested in the utility of geospatial technology and participatory mapping techniques for increasing the long-term sustainability of water and sanitation projects in developing nations.



THOMAS DAVIS
Texas A&M University, Corpus Christi

While majoring in geospatial surveying engineering, Thomas currently works for the Army Corps of Engineers New Orleans District in their survey and geospatial engineering sections. His primary area of interest focuses on the integration of UAS into the National Airspace System. Thomas has worked with both his university and the Corps of Engineers utilizing UAS as a platform for performing coastal erosion and emergency-response mapping.



GRANT DELOZIER
University of Oklahoma

Grant graduated with bachelor degrees in geographic information science and political science from the University of Oklahoma. Carrying over his research to graduate school, Grant is looking at problems related to resolving toponyms in natural language. His thesis aims to resolve toponyms in much more varied and complex linguistic environments. Grant is currently working on his master's in computational linguistics.



JUSTIN FUNG
Columbia University

Justin recently received his master's in operations research from the School of Engineering and Applied Science at Columbia University. Currently, he is a project coordinator with The Earth Institute researching spatial decision support systems (SDSS) to combat urban climate change risks in India, and will be directing a grant from the Rockefeller Foundation to create an emergency evacuation SDSS for the New York City Office of Emergency Management.



SHANE GRIGSBY
University of California, Santa Barbara

Shane graduated from the University of Colorado with a BA in philosophy and geography, and is currently pursuing an advanced degree. His research interests include spatial indexing, machine learning, and remote sensing. While his scientific focus primarily concerns the terrestrial biosphere, Shane's geospatial focus is in processing large unstructured data sets into meaningful groups of objects that can be aggregated into populations.



MATTHEW MACDONALD
Northwest Missouri State University

Matt's professional career is in geospatial information sciences and geospatial intelligence working with government agencies, industry leading private sector companies, and GISciences research centers involved with GEOINT solutions for national security and environmental sciences. Matt graduated with a bachelor's degree in geography with an emphasis in GIS from the University of Missouri, is certified in GEOINT and GIS, and is currently completing his master's in GIS.



THOMAS MUSCOLO
MIT Sloan School of Management

Tom is pursuing an MBA focused on business strategy, operations, and entrepreneurship. He previously spent three years at L-3 Integrated Optical Systems, SSG as a mechanical engineer. Tom is interested in applying commercial technologies and manufacturing practices to the next generation of intelligence gathering satellite payloads. Prior to joining L-3, Tom earned a B.S. in mechanical engineering from Northeastern University.



JAKEB PRICKETT
University of Arizona

Jakeb served nine years in the Army National Guard as an imagery analyst and all source intelligence analyst. Upon completion of his service, Jakeb attended the University of Oregon and received his bachelor's of science degree in geography with a focus on GIS. He completed an internship at the NASA Langley Research Center. His research interests include remote sensing for natural disaster support and spatial analysis.



RICHARD "MIKE" RODRIGUEZ
George Mason University

Mike is currently pursuing a master's degree in geoinformatics and geospatial intelligence and serving in a graduate internship for NGA. His academic interests are in social media and open source geospatial intelligence. Mike is a U.S. Army Veteran, native of New Mexico, and plans to graduate in May 2014.

UNDERGRADUATE



PATRICIA BURROS

Texas State University, San Marcos

Patricia has worked with the Edwards Aquifer Protection Program within the Texas Commission of Environmental Quality to create layers, maps, and a geodatabase for their program. This experience has given her a love and excitement for the possibilities this field can offer for her future. Patricia's major is water resources, and her minor is geology.



ANNA KALINOWSKI

University of Missouri

Anna is pursuing a degree in electrical engineering with minors in computer science and mathematics. She conducts undergraduate research at the university's center for geospatial intelligence and has interned with NGA, where she had the chance of applying her engineering skills to the area of national defense. Someday, Anna hopes to hold a position of leadership at NGA.



BRIANA NEUBERGER

Rochester Institute of Technology

Briana is currently pursuing degrees in imaging science and industrial/systems engineering at RIT. During high school, she competed in a GIS challenge with the assistance of a local community college professor. Since then, she has discovered a broader range of opportunities in this field and has been introduced to a wide array of professionals in the industry.



TANYA PETACH

Harvard University

Tanya is a junior studying earth and planetary sciences and environmental engineering at Harvard University. She enjoys working with a team mapping the geology in Death Valley and Outer Mongolia. The research projects combine fieldwork with GIS representations of ground units, subsurface geology, and three-dimensional representations of Earth systems.

GRADUATING HIGH SCHOOL SENIOR



ALAYNA BIGALBAL

Heritage High School, Leesburg, VA

Alayna received the William & Mary Leadership Award and the Loudoun Times Mirror Student Athlete of the year. She is attending George Mason University as an honors student and athlete. Alayna plans to pursue a career in civil engineering, and hopes to continue using GIS to create, manage, and analyze data associated with developing and managing infrastructure around the world.



CHANDLER BURKE

St. Mark's School of Texas, Dallas, TX

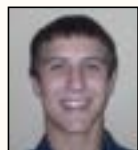
This summer, Chandler and his classmates won first place at the Nation for the TSA TEAMS Engineering Competition. Chandler interned at the University of Texas–Dallas, where he researched the effects and possible treatment for traumatic brain injuries in rats. As a trustee-distinguished scholar and National Merit finalist, Chandler attends Rice University and intends to pursue a degree in engineering or computer science.



ROBERT WESTON GADDIS

Homeschooled, Riverton, UT

During Robert's junior and senior year in high school, he enrolled in Salt Lake Community College. He graduated with an associate's degree and several geospatial classes under his belt. Robert is attending Missouri State University where he is majoring in geospatial sciences. His career goal is to enter the intelligence field, specifically at NGA.



JASON MOEDER

Bowie High School, Bowie, MD

Jason is attending the University of Maryland, College Park and majoring in geographic information systems. He intends to apply for an internship at NGA, as well as to contractors working closely with them. Once Jason obtains a degree in this field, he plans to join NGA and pursue a career in the GEOINT Community.



RACHEL TAYLOR

West Springfield High School, Springfield, VA

Rachel began college at Brigham Young University where she plans to major in astrophysics with a minor in geospatial information systems. Her love for geospatial technologies began in a high school geosystems class, where it inspired her to pursue a career field in the discipline. Her interests include satellite-based geospatial technologies, education, and outdoor high-adventure activities.



LOUIS WERTS III

Tuscarora High School, Leesburg, VA

In addition to graduating from Tuscarora High School, Louis completed schooling at the Loudoun County Academy of Science (AOS). While attending, he researched nano-satellites and gained a better understanding of systems engineering, project management, and geospatial intelligence technology. Louis plans to take this knowledge with him to the College of William and Mary and major in either math or physics.



Scholarship Program

2014 Applications
Now Available

Recognizing Leadership for the Present and Future ...

The United States Geospatial Intelligence Foundation (USGIF), a 501(c)(3) nonprofit educational organization, has a mission to Build the Community, Advance the Tradecraft, and Accelerate Innovation. To support the next generation who will carry this torch, USGIF provides scholarships to promising students interested in the geospatial sciences. Since 2004, USGIF has awarded \$691,000 in scholarships.

The Scholarship Program provides the opportunity to invest in the future of this incredibly exciting and relevant field of study.

- The Scholarship Program is open to graduating high school seniors, undergraduates, graduates and doctoral students.
- All scholarship recipients are chosen based on their academic and professional excellence in a field related to the geospatial intelligence tradecraft.

For more information on the USGIF Scholarship Program or to apply, please visit usgif.org/education/scholarships

Application Deadline: April 25, 2014

The Scholarship Program is partially funded by the annual Alder Golf Classic, our members, the Combined Federal Campaign and other donations.



Build the Community | Advance the Tradecraft | Accelerate Innovation

usgif.org